

What do we know about the timber resource in the SW region?

Justin Gilbert

Inventory and Forecasting
Officer

Biometrics, Surveys and Statistics Division,
Forest Research
Northern Research Station

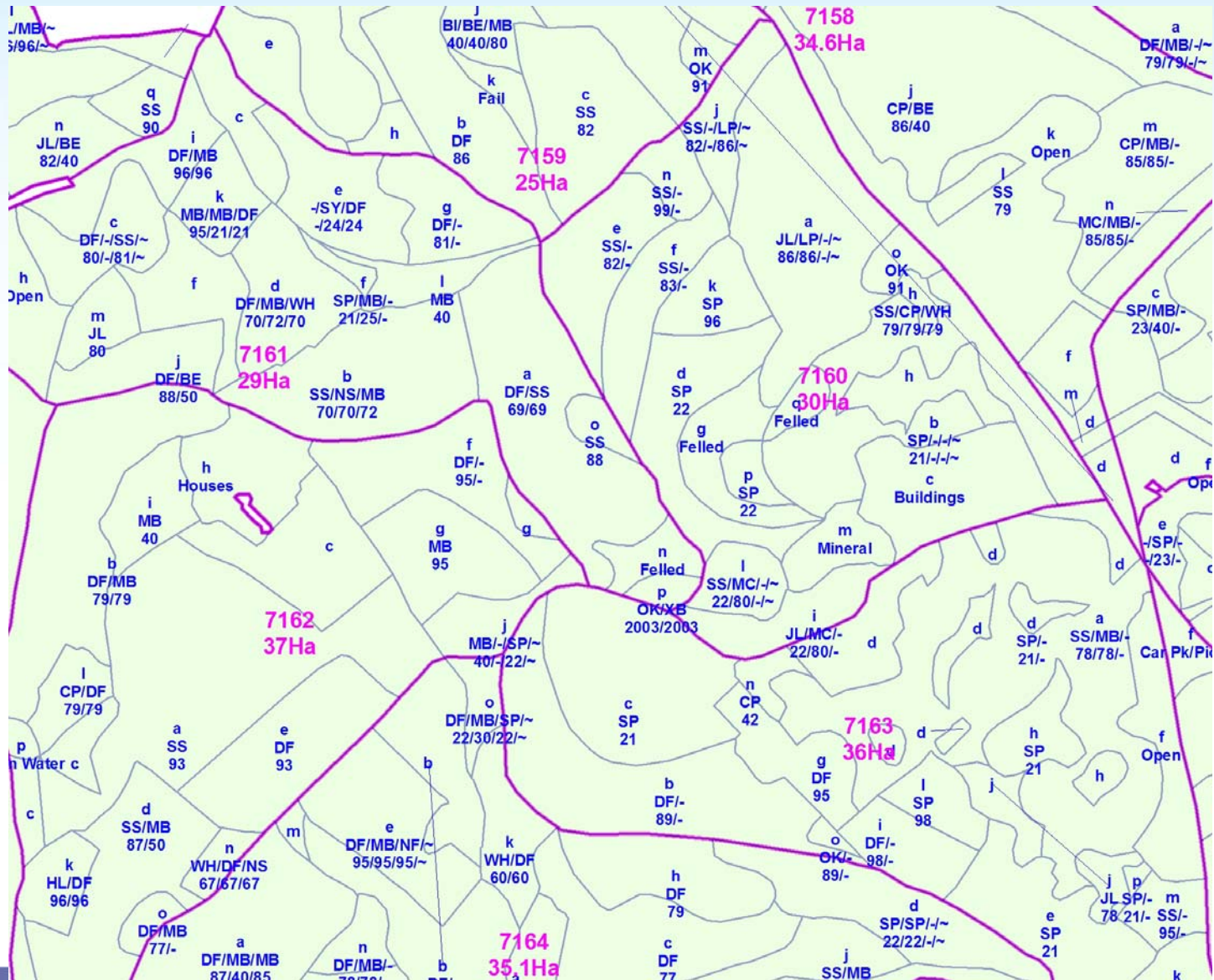


Introduction

- 2 contrasting sources of information
 - Forestry Commission woodland (Forest Enterprise)
 - Other (Private Sector)
- National Inventory of Woodland and Trees

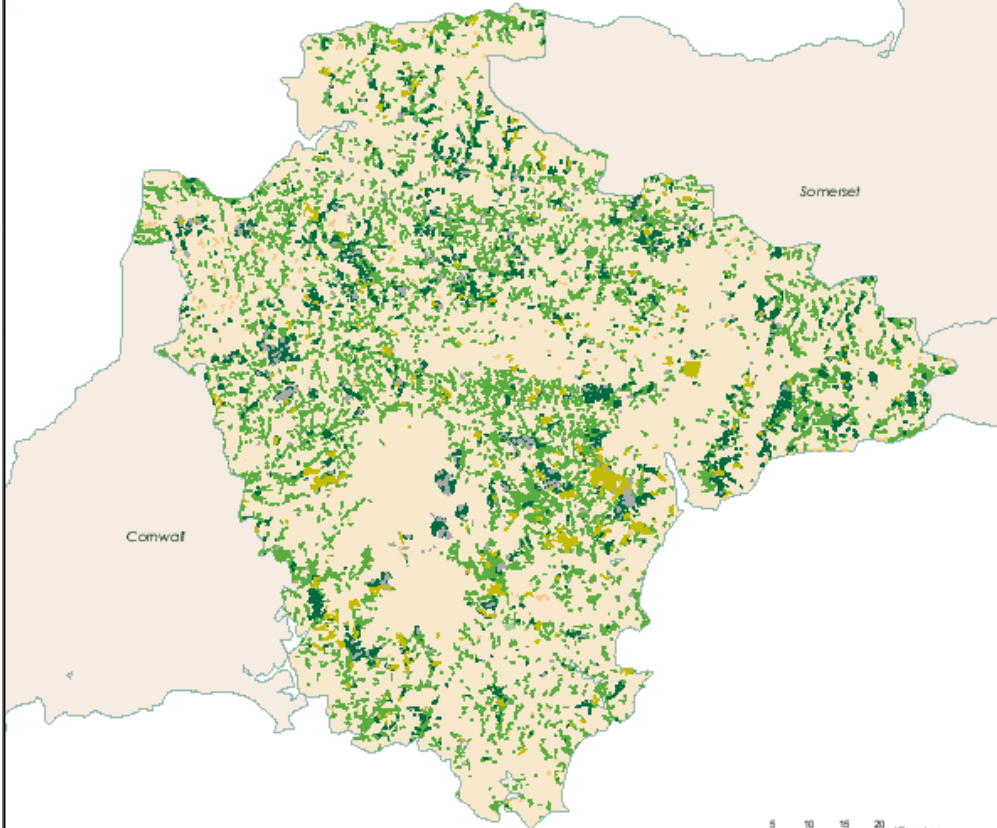


Forester GIS - detailed mapping and data



Map 4 Distribution of woodland over 2 hectares by Interpreted Forest Type

- Broadleaves
- Conifer
- Mixed
- Felled
- Young trees & shrubs
- Ground prepared for planting
- Coppice



Based on Ordnance Survey mapping with the permission of the
 Controller of Her Majesty's Stationary Office.
 © Crown Copyright - Forestry Commission Licence No:GD272388

National Inventory

Mapping from air photos

1% ground sample by area

data collected for 1ha squares
 and includes:
 species
 planting year
 timber potential
 understocking
 extractability

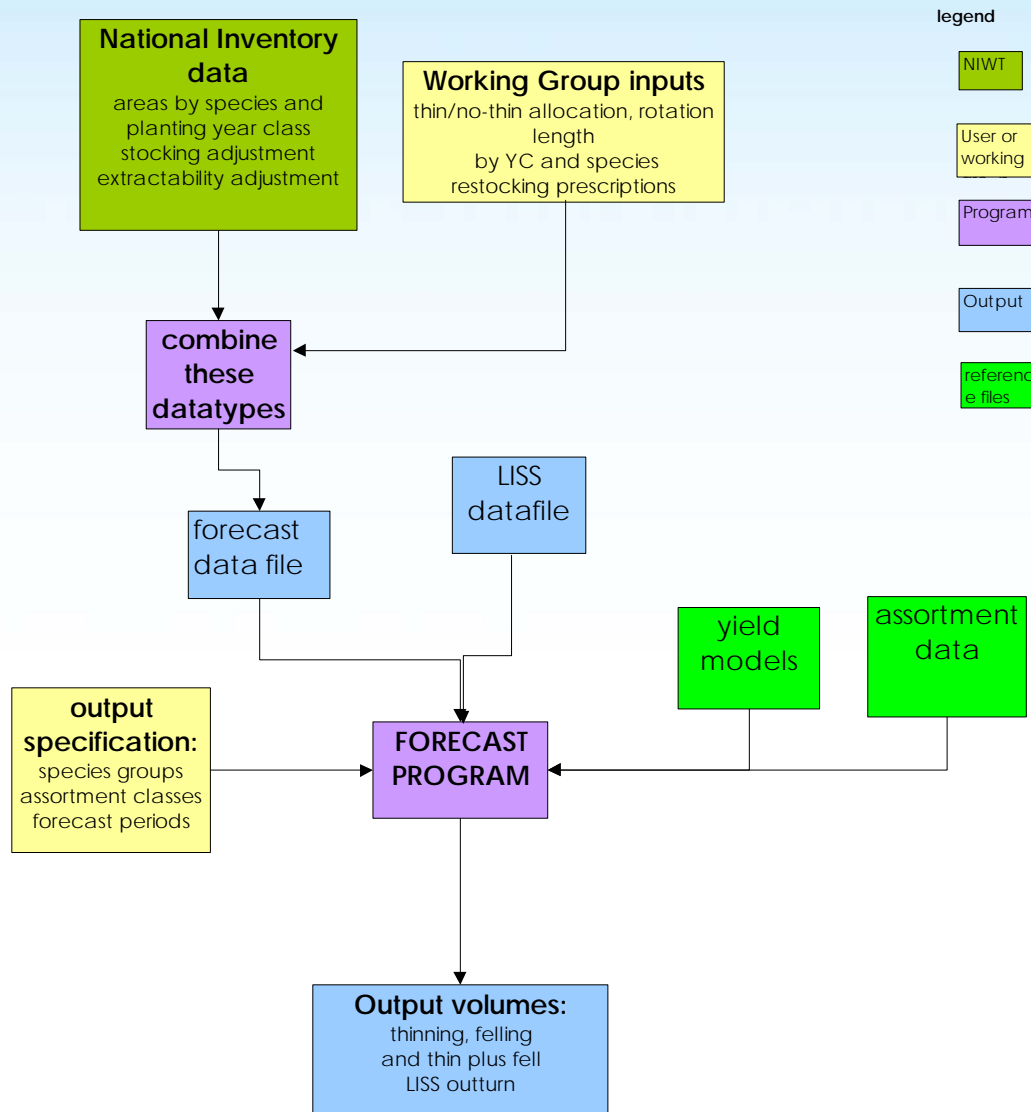
but not:
 management information
 yield class
 standing volume

National Inventory data
 updated from grant information
 to account for new planting since
 the reference date (31.3.1997)

Table 5c High Forest - Other Ownerships - Areas by Principal Species and Planting Year Classes

Species	Planting Year Class							
	1998-2005	1991-1997	1981-1990	1971-1980	1961-1970	1951-1960	1941-1950	1931-1940
SP	138	171	356	932	945	1006	746	288
CP	92	114	128	582	275	552	159	82
LP	0	0	0	0	0	0	0	0
SS	133	165	259	860	698	298	306	9
NS	201	249	619	1463	1314	1146	435	38
EL	11	14	98	413	821	714	559	125
JL/HL	23	29	473	1008	1325	1205	364	234
DF	834	1033	1378	1056	2111	2472	620	218
XC	93	115	837	639	977	619	312	58
MC	31	38	263	308	586	644	844	93

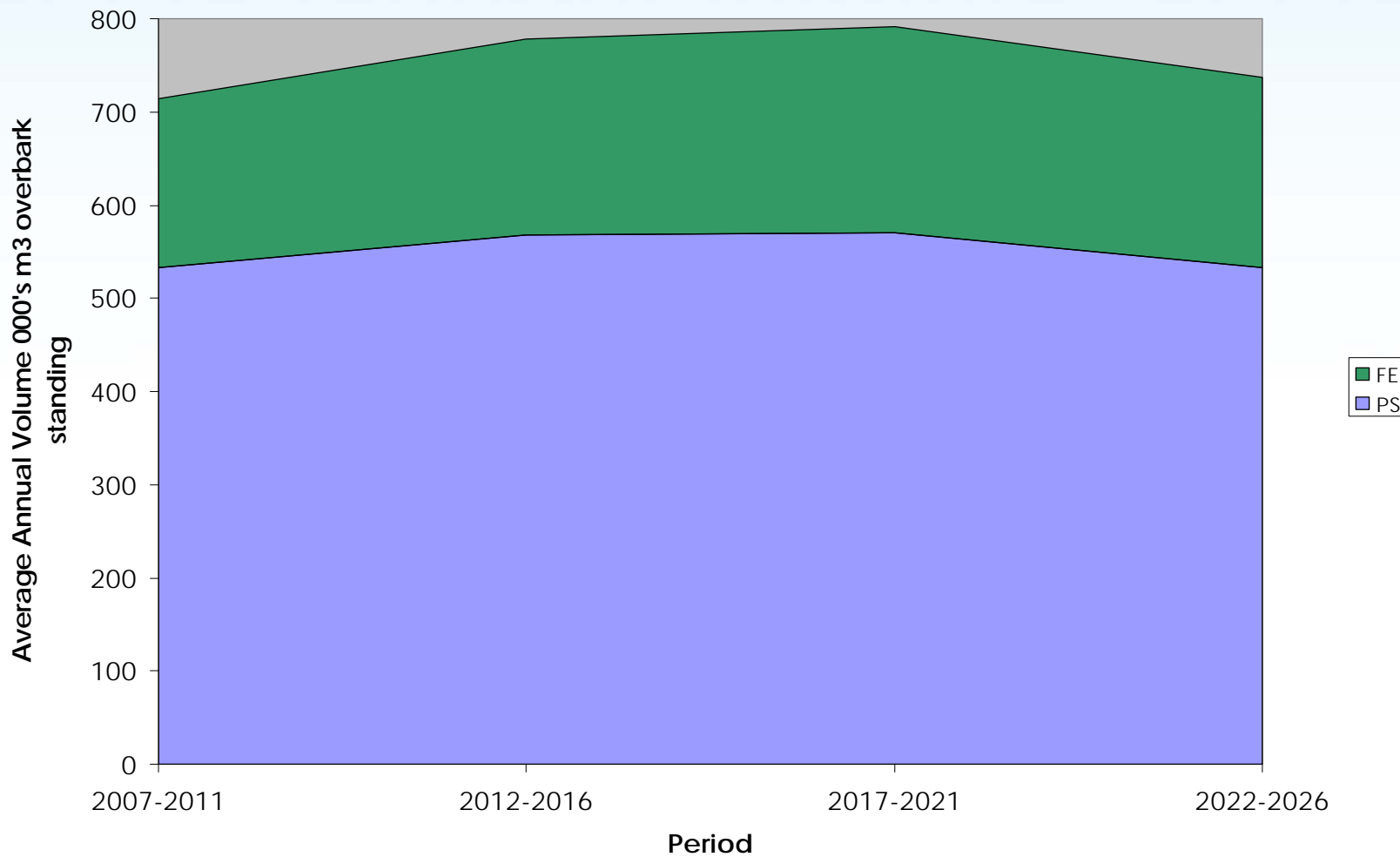
Private Sector Forecasting System 2005



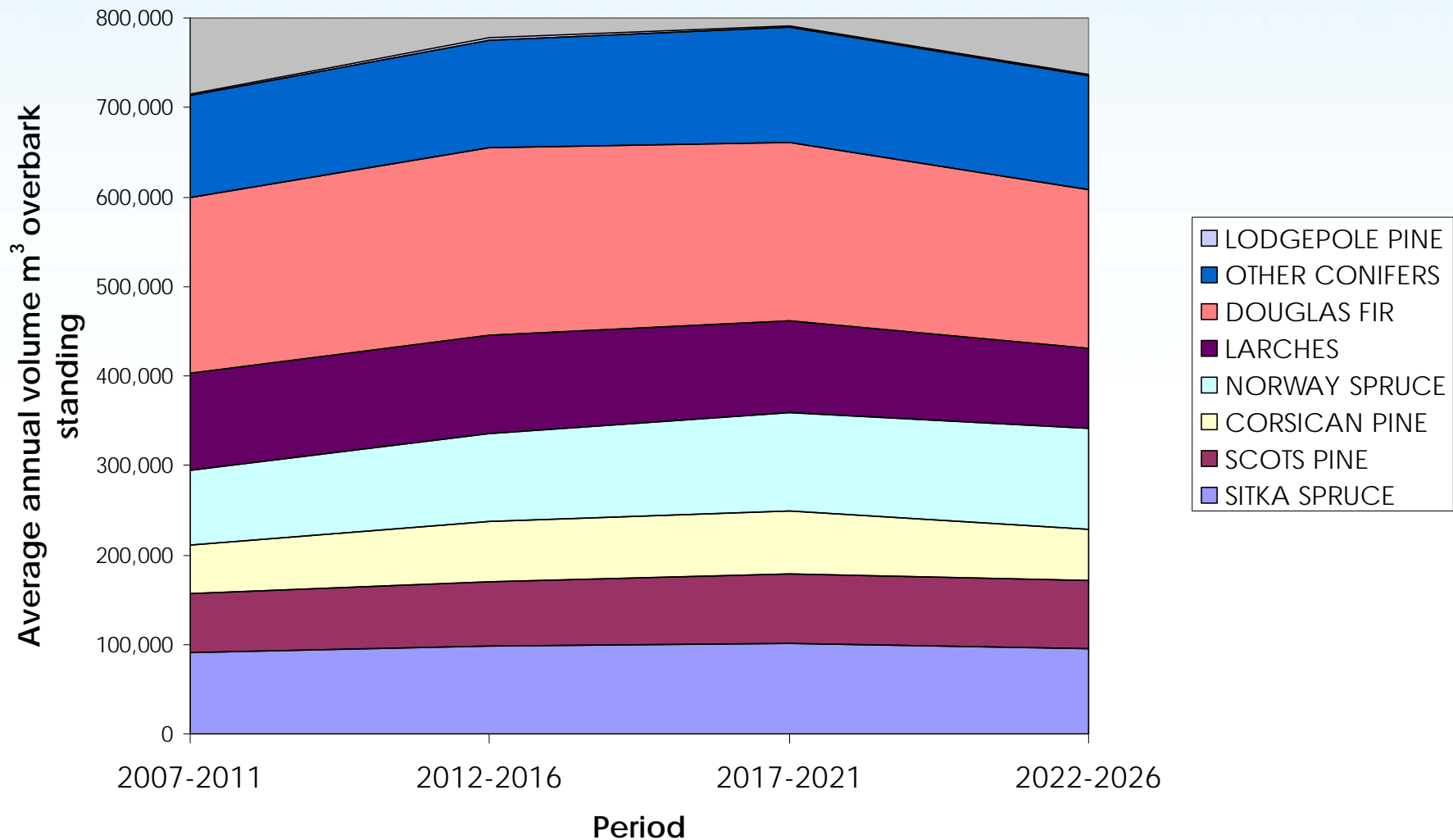
South West England - Private Sector
Average annual Thin Plus Fell Volumes
 Thousands m³ overbark standing

Species	Period		Top-diameter class				Total
			7-14	14-16	16-18	18+	
SITKA SPRUCE	2007	2011	6	3	4	35	48
SCOTS PINE	2007	2011	9	4	4	36	52
CORSICAN PINE	2007	2011	4	2	2	18	27
NORWAY SPRUCE	2007	2011	13	5	5	38	61
LARCHES	2007	2011	10	5	6	73	93
DOUGLAS FIR	2007	2011	22	7	7	121	156
OTHER CONIFERS	2007	2011	16	6	7	67	96
LODGEPOLE PINE	2007	2011	0	0	0	0	0

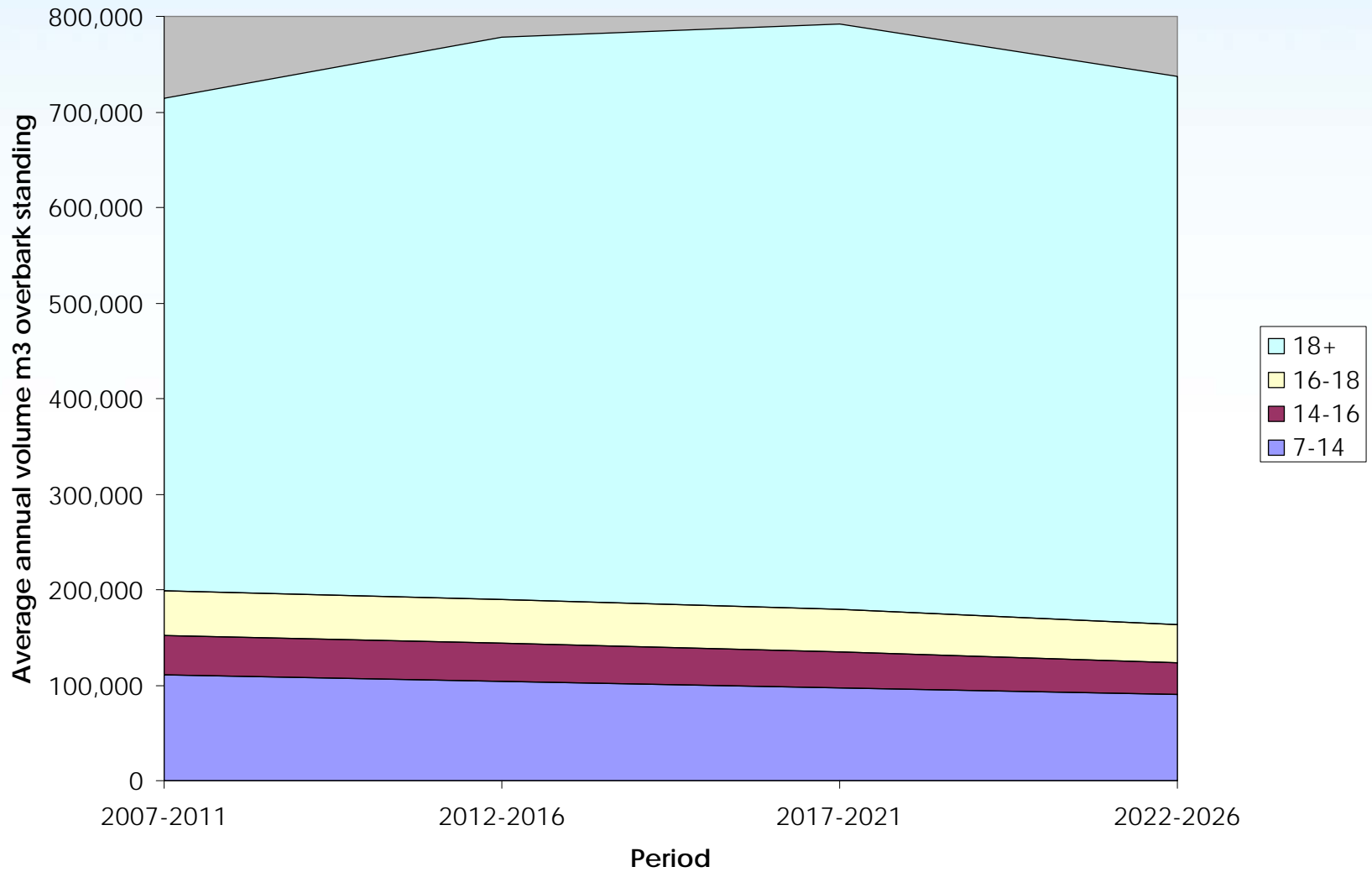
South West England - Forecast of Softwood Timber Availability contribution by sector



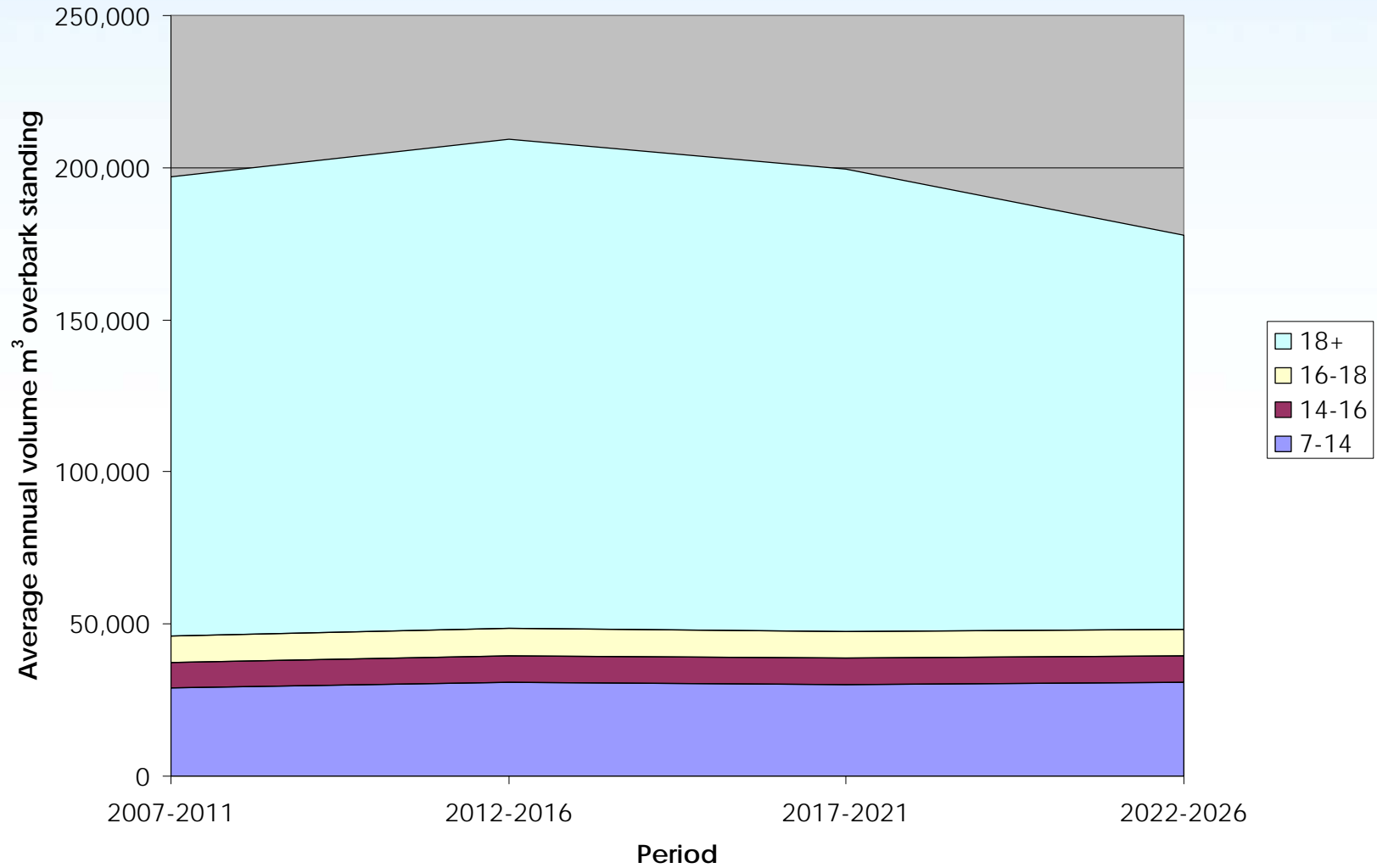
Wood Supply - Forecast of Softwood Availability Thinning plus felling volume by species



Wood Supply - Forecast of Softwood Availability Thinning plus felling volume by top-diameter class



Wood Supply - Forecast of Softwood Availability - Douglas fir Thinning plus felling volume by top-diameter class



Some possible questions

- What do we know about the SW timber resource in terms of:
 - quality
 - strength
- How does this information relate to Douglas fir?
- What proportion of the SW timber resource could be used in the construction industry?

Monitoring and Evaluating the Timber Resource

- **National Inventory of Woodlands and Trees, 1995-1999**

(previously

- Census of Woodlands and Trees 1979-82
- Census of Woodlands 1965-67
- Census of Woodlands 1947-1949
- Census of Woodlands and Census of Production of Home-grown timber, 1924)

Monitoring and Evaluating the Timber Resource 2

- modelling to predict timber yields from tree crops
- model for estimating numbers and volumes of specified timber products that can be harvested
- model that generates estimates of the distribution of tree size classes from stand summary information (essential input to previous item)

Timber Properties Programme

– *Recent Projects*

- Survey of stem straightness in Sitka spruce
- Construction of a timber quality model for Sitka spruce
- Effect of wind exposure effects on timber quality
- Effect of windblow on timber quality
- Mechanical properties of Lodgepole pine provenances
- Compression wood in Sitka spruce and Scots pine
- Review impact of conversion to Continuous Cover Forestry on timber quality



Timber Properties Programme 2

- *Future Projects*
- Integration of straightness scoring with National Inventory \Rightarrow improved forecasts of resource quality
- Physiology of stem straightness in Sitka spruce and Scots pine
- Further development of timber quality model for Sitka spruce and start building model for Scots pine
- Evaluation of log out-turn and batten performance from improved Sitka spruce progeny
- Assessment of Scots pine resource in North Scotland

Information sheet

- **National Inventory reports** are available on the web:
- www.forestry.gov.uk/inventory
- and includes reports for GB, countries, regions and counties which can be read on-line or down-loaded.
- The **2005 Forecast** can be found:
- www.forestry.gov.uk
- follow quick links > Timber > Timber production > Production Forecast
- **Forest research website**
- www.forestresearch.gov.uk
- and follow research themes to:
- evaluating woodland resources and potentials
- sustainable forest management
- **Biomass Energy Centre**
- www.biomassenergycentre.org.uk
- Ian Tubby 01420 526197
- **Woodfuel resource in GB**
- www.eforestry.gov.uk/woodfuel
- based on the 2000 forecast but still the only general, countrywide source of information on woodfuel availability.